

# KEYNOTE & INVITED SPEAKERS

Asian and Australasian  
Society of Labour Economics  
2018 Conference



## KEYNOTE SPEAKERS



**Richard  
Blundell**

**Ricardo Professor of  
Political Economy**

**Department of  
Economics, University  
College London**

Professor Sir Richard Blundell, CBE FBA holds the David Ricardo Chair of Political Economy at University College London where he was appointed Professor of Economics in 1984. He is a graduate of the University of Bristol and the London School of Economics. He held his first academic appointment at University of Manchester. He is Director of the ESRC Centre for the Microeconomic Analysis of Public Policy at the Institute for Fiscal Studies (IFS) where he was Research Director from 1986-2016. He has held visiting professor positions at UBC, MIT and Berkeley. He was awarded a Commander of the Most Excellent Order of the British Empire (CBE) and a Knighthood for services to Economics and Social Science. His research covers the empirical microeconomic study of consumer, savings and labour supply behaviour. He has studied the relationship between taxation, family labour supply and consumer behavior. He has developed new microeconomic tools for the study of dynamic panel data models and the nonparametric analysis of individual decisions.



**Henry  
Farber**

**Hughes-Rogers  
Professor of  
Economics**

**Department of  
Economics, Princeton  
University**

Henry Farber is the Hughes-Rogers Professor of Economics and an Associate of the Industrial Relations Section at Princeton University. Professor Farber graduated from Rensselaer Polytechnic Institute (B.S., 1972) the New York State School of Industrial and Labor Relations, Cornell University, (M.S., 1974) and Princeton University (Ph.D., 1977). In addition to his faculty position at Princeton, Farber is a Research Associate of the National Bureau of Economic Research (NBER) and a Research Fellow of the Institute for the Study of Labor (IZA). He is also a Fellow of the Econometric Society, the Society of Labor Economists, and the Labor and Employment Relations Association. Before joining the Princeton faculty in 1991, Farber was Professor of Economics at the Massachusetts Institute of Technology (1977-1991). Farber's current research interests include unemployment, liquidity constraints and labor supply, labor unions, worker mobility, wage dynamics, and analysis of the litigation process.

---

## INVITED SPEAKERS

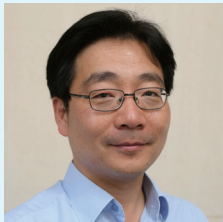


**David  
Green**

**Professor of  
Economics (Director)**

**Vancouver School  
of Economics, The  
University of British  
Columbia**

David Green is a professor in the Vancouver School of Economics at University of British Columbia and an International Fellow at the Institute for Fiscal Studies in London. He is also an External Fellow of the Centre for Research and Analysis of Migration, University College London and a Research Associate of the Canadian Centre for Policy Alternatives. Professor Green graduated from Queen's University (B.A., 1984) and Stanford University (Ph.D., 1990). His research interests centre around determinants of the wage and employment structure. In his recent work, this has entailed bridging between macro labour (worrying about general equilibrium effects) and micro labour identification issues.



**Simon (Sokbae)  
Lee**

**Professor of  
Economics**

**Department of  
Economics, Columbia  
University**

Sokbae "Simon" Lee is a Professor of Economics at Columbia University in the City of New York. He is also a Research Economist of the Centre for Microdata Methods and Practice (CeMMAP), the Institute for Fiscal Studies. Simon graduated from Seoul National University (B.A. and M.A., 1998) and the University of Iowa (Ph.D., 2002). He held his first academic appointment at University College London. Before joining the Columbia faculty in 2016, he was a Professor of Economics at Seoul National University. His research includes diverse topics of econometrics, applied microeconomics, and statistics. Professor Lee has been elected a 2014 Fellow of the Econometric Society.

---

## INVITED SPEAKERS



**Jessica  
Pan**

**Associate Professor  
of Economics**

**Department of  
Economics, National  
University of  
Singapore**

Jessica Pan is an Associate Professor of Economics at the National University of Singapore. In addition, Jessica is a Research Fellow of the Institute for the Study of Labor (IZA) since March 2016. Jessica's research focuses on applied topics in labor economics and the economics of education. Her current projects examine gender differences in labor market and educational outcomes; international migration and the labor market effects on source and host countries; and topics in labor economics such as discrimination, marriage markets, and the returns to education. Her work has been published in several leading peer-reviewed journals, including the Quarterly Journal of Economics, the Journal of Labor Economics, and the American Economic Journal: Applied Economics. She was born in Singapore and received a Bachelor's in economics from the University of Chicago, followed by an MBA and Ph.D. from the University of Chicago, Booth School of Business.



**Uta  
Schönberg**

**Professor of  
Economics**

**Department of  
Economics,  
University College  
London**

Uta Schönberg is a Professor of Economics at University College London (UCL) and a Researcher at the Institute for Employment Research (IAB) in Nuremberg. Professor Schönberg graduated from the University of Hanover (M.S., 1998) and the University College London (Ph.D., 2004). In addition to her faculty position at UCL, Schönberg is a Research Fellow of the Institute for the Study of Labor (IZA). Before joining the UCL faculty in 2008, she was an Assistant Professor at the University of Rochester. Her research is in applied microeconomics, with a special interest in wage inequality and wage dynamics; family economics; the economics of education; and the economics of migration. Schönberg was awarded the Philipp Leverhulme Prize in 2016 and is currently a Joint Managing Editor at the Review of Economic Studies.

## CONFERENCE DINNER SPEAKER



**Changyong Rhee**

Director of the Asia and Pacific Department

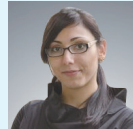
International Monetary Fund

Changyong Rhee is the Director of the Asia and Pacific Department at the IMF, where he oversees the Fund's work on the region, including its lending operations and bilateral and multilateral surveillance of economies ranging from China, Japan, and India to the Pacific Islands. Prior to joining the IMF in February 2014, Mr. Rhee was Chief Economist of the Asian Development Bank (ADB); Secretary General and Sherpa of the Presidential Committee for the 2010 G-20 Seoul Summit; Vice Chairman of the Financial Services Commission (FSC) and Chairman of the Securities and Futures Commission of Korea; professor of economics at Seoul National University and the University of Rochester. He has also been a frequent policy advisor to the Government of Korea, including in the Office of the President, the Ministry of Finance and Economy, the Bank of Korea, the Korea Securities Depository, and the Korea Development Institute. Mr. Rhee has published widely in the fields of macroeconomics, financial economics, and on the Korean economy. He holds a Ph.D. from Harvard University and an undergraduate honors degree from Seoul National University, both in economics.

## Organising Committee



**Christian Dustmann**  
University College London



**Maria Lambrianidou**  
University College London



**Sok Chul Hong**  
Seoul National University



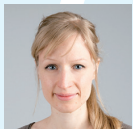
**Chulhee Lee**  
Seoul National University



**Dae-II Kim**  
Seoul National University



**Jungmin Lee**  
Seoul National University



**Alice Kügler**  
University College London

# CONFERENCE PROGRAMME

Asian and Australasian  
Society of Labour Economics  
2018 Conference